

bók

jól

lím

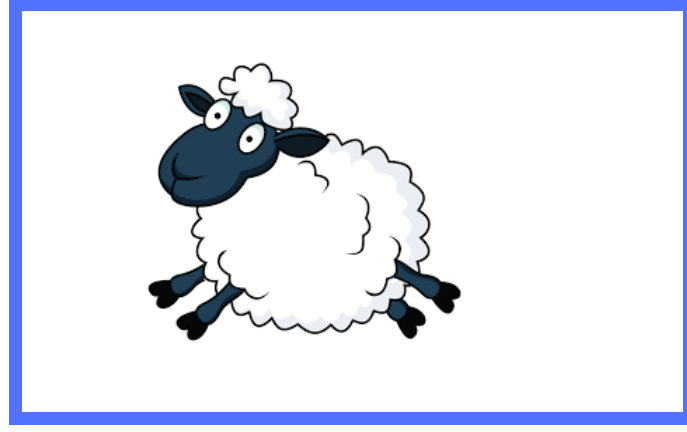
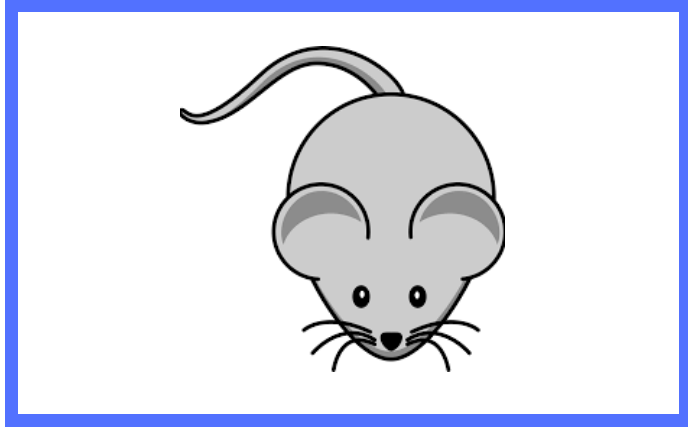
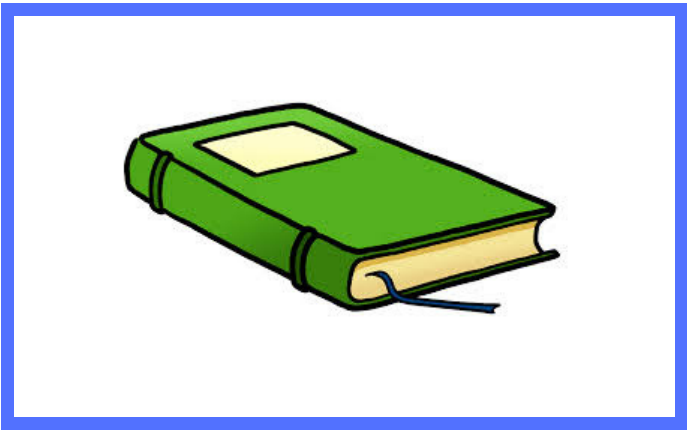
mús

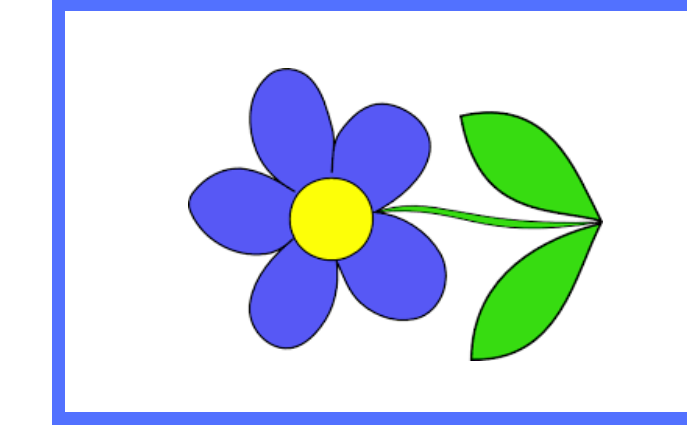
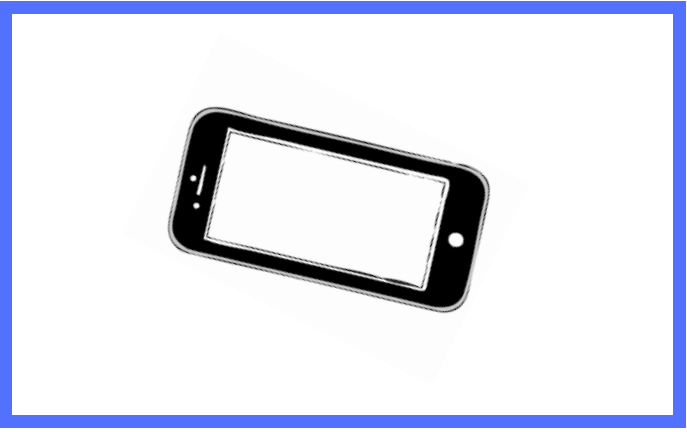
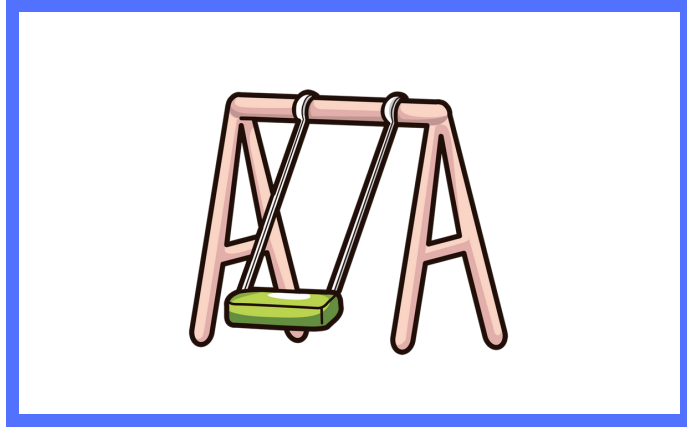
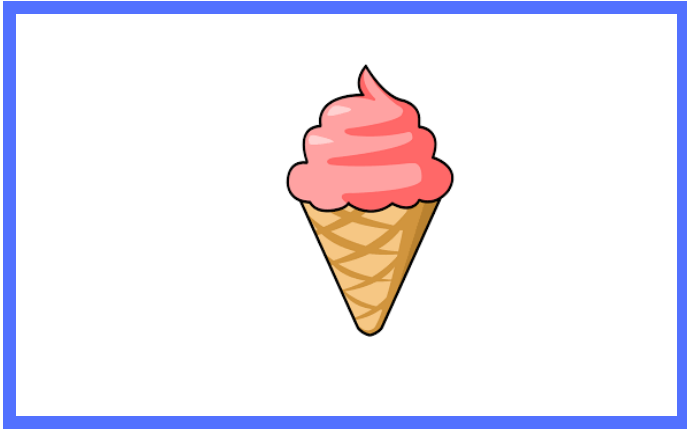
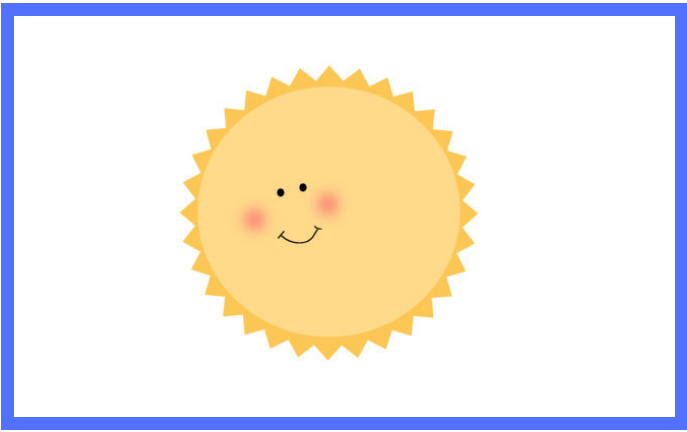
ól

él

ból

ær





sól

lás

ís

róla

sími

rós

rúm

blóm

baer

hjól

bál

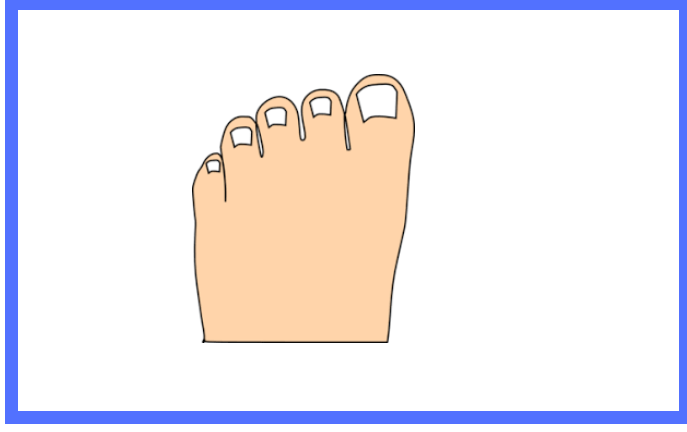
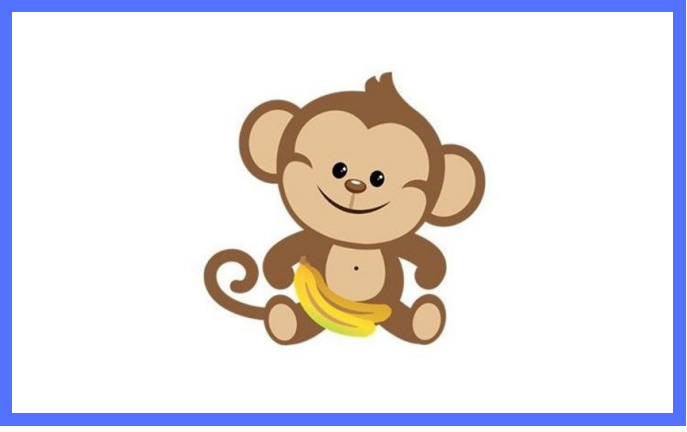
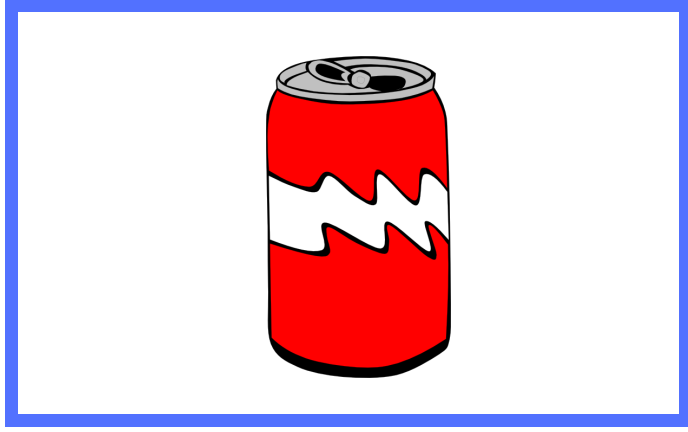
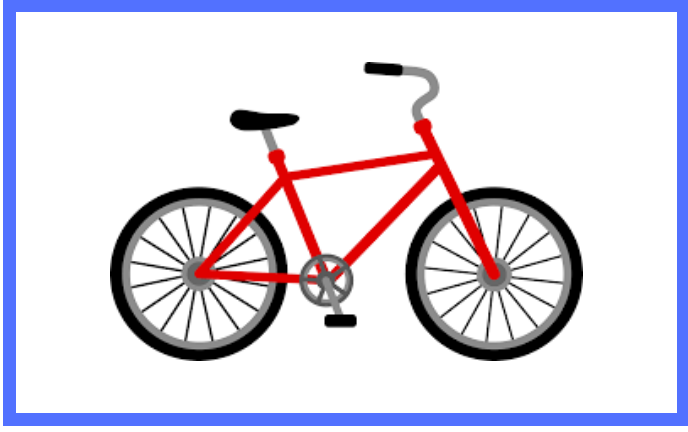
dós

api

taer

tá

tár



egg

þak

epli

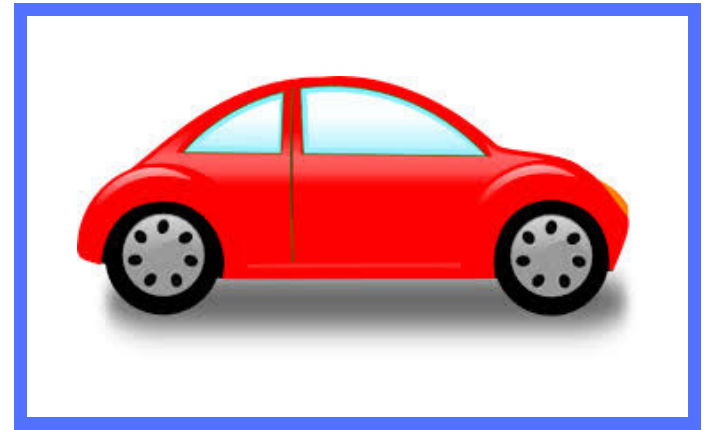
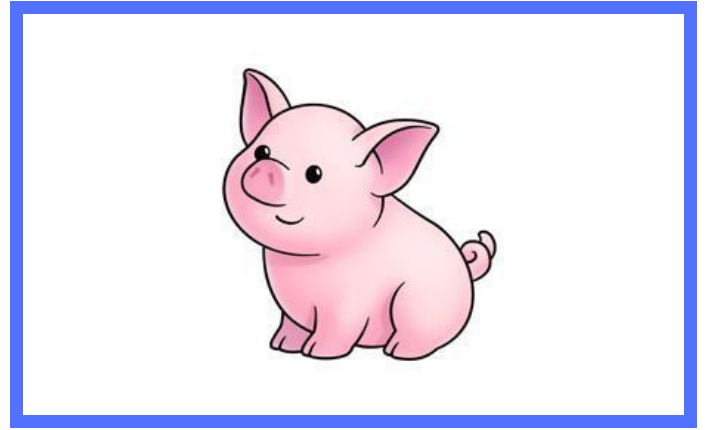
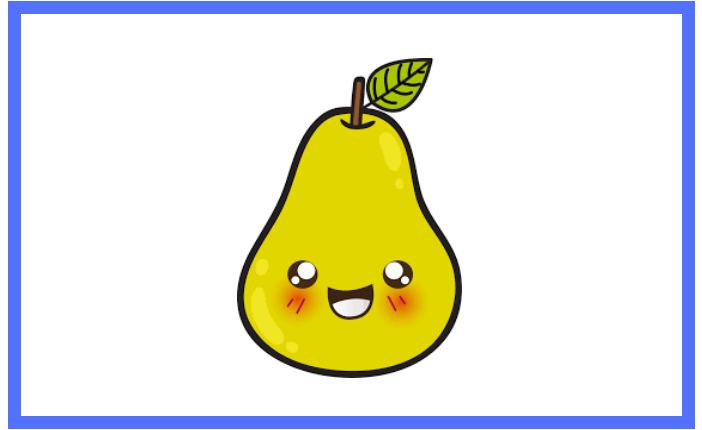
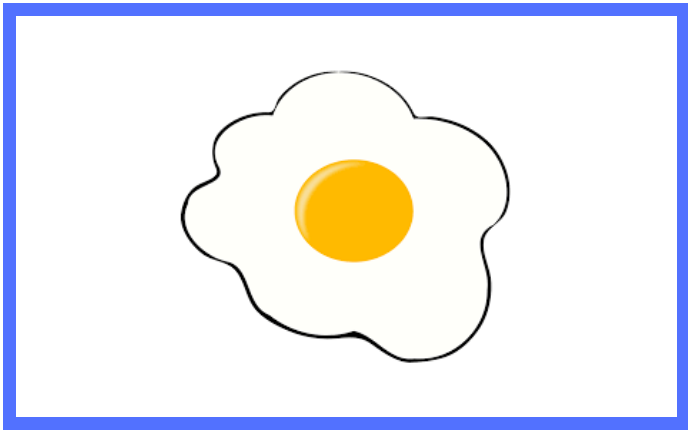
pera

svín

grís

kísa

bíll



fíll

fáni

ljón

ljós

maur

fugl

mýs

ás

